



# **SUBCABINET ON MILITARY DOWNSIZING**

Governor's Conference Room  
Legislative Building



**Department of Commerce**  
Innovation is in our nature.

# Operation Military Family

**Presentation to Governor's Subcabinet  
on Military Downsizing**

**WA State Department of Commerce**

**OEA Grant – State Analysis Review**

**June 17, 2015**

**Mike Schindler, CEO**  
mschindler@opmilfam.com  
**Lori Grant, COO**  
lgrant@opmilfam.com





# ABOUT OMF

- Federal and State Certified Veteran-Owned Small Business in Edmonds, WA
- Founded in 2008 by US Navy Veteran
- Awarded WA State Patriotism Award in 2011
- *OMF's overall Open Ratings performance rating was 97 out of 100*

## **WE SPECIALIZE IN:**

- Military-to-Civilian Transition consulting, training
- Multi-agency, cross-jurisdictional coordination
- Discovering & automating manual processes

## **WHY WE'RE DIFFERENT:**

- Veteran-centric web & technology solutions  
(VAPP & VAPPedu)
- Federal, State & Commercial contracting experience
- Operations experience in civil-military relations to achieve objectives



## State Analysis

# THE TASK

The purpose of this contract is to focus on the **state's current capacity** to understand, plan for and support implementation of a **statewide military and defense economic diversification strategy** as well as the state's capacity to conduct targeted **workforce transition support** of defense-sector employees to other sectors of the economy.



## State Analysis

# PROJECT OVERVIEW

Interviewed 23 stakeholders

- Identified **key state agencies** & their partners
- Identified **CURRENT** processes used to respond to **INDUSTRY** downsizing
- Assess stakeholders' ability to apply **CURRENT processes & resources** to the Military & Defense Sector



## State Analysis

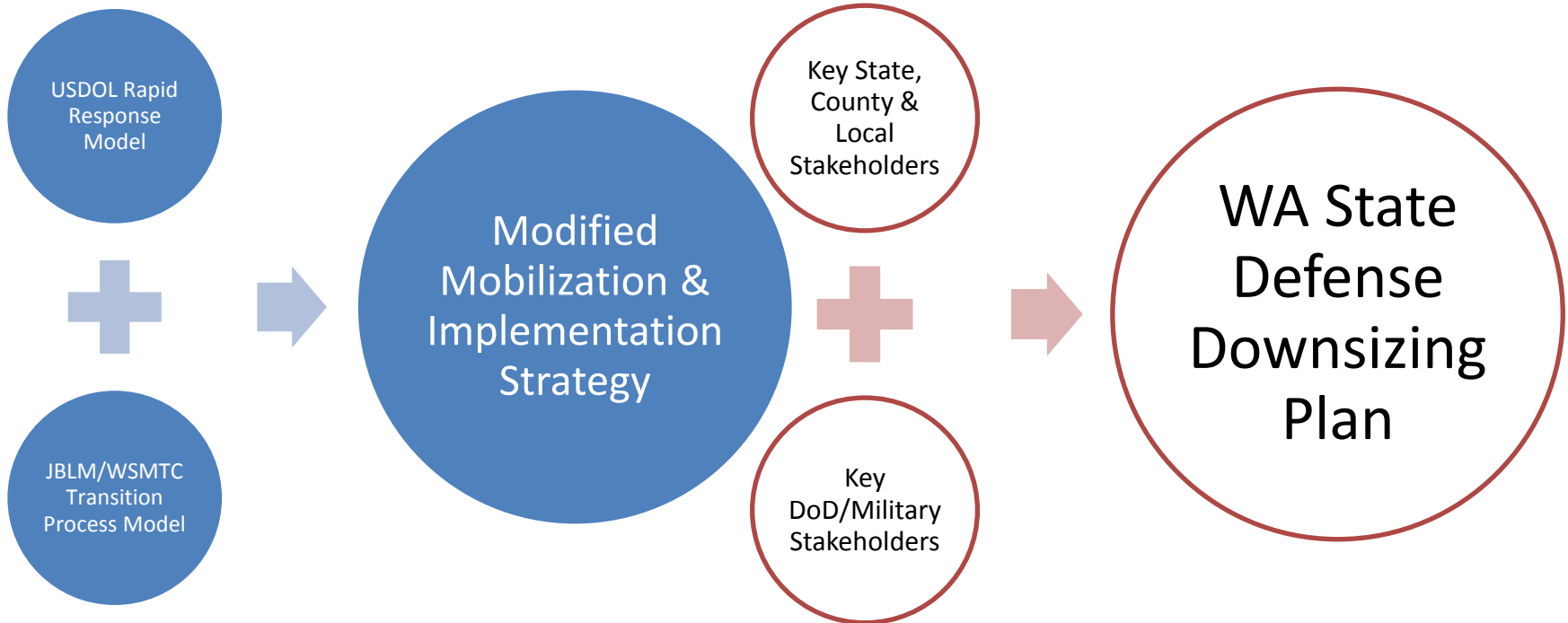
# NEXT STEPS

OMF's preliminary recommendations are based on interviewee findings:

- There are **two EXISTING processes** in place to help dislocated workers. These processes apply to service members as they transition out of the military
  - Key agencies and partners strongly support the **USDOL Rapid Response** program
  - The **JBLM/WSMTC transition process** for service members was also identified as a potential component of a Defense Sector downsizing plan
- Suggest merging these two processes to create a “modified mobilization strategy and implementation plan”



# State Analysis

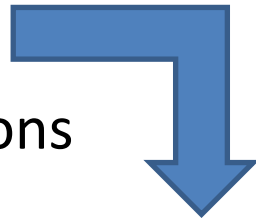




## State Analysis

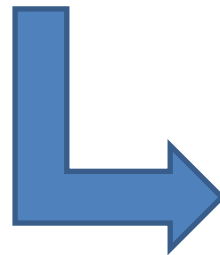
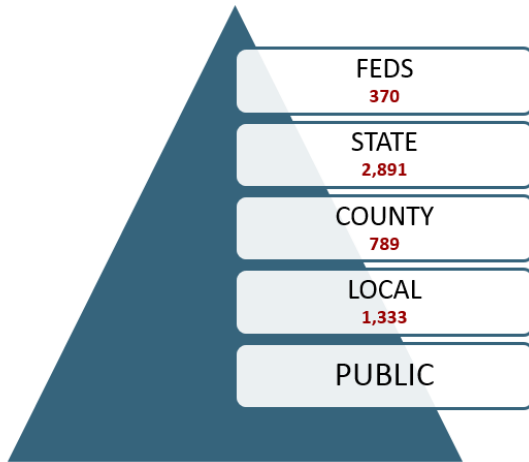
# KEY FINDINGS

Identified **5**  
major jurisdictions  
in process flow



Identified **8** unique  
major processes across  
23 stakeholders

- Notification of downsizing
- Initiate WA State, county, and WDC process
- Establish & manage WMA membership comm. & reporting tools
- SSMCP reports to membership & City of Lakewood
- Adjust & scale WSMTC process for dislocated civilian workers
- Engage LVRs & DVOPs for increased number of transitioning SMS
- Provide Rapid Response Team services
- Update WA State residents of defense-sector downsizing plan



Identified **80** unique activities/  
tasks across 23 stakeholders

RESULTING IN **5,383** PROCESS TASKS IN A POTENTIAL  
MILITARY & DEFENSE SECTOR DOWNSIZING PLAN

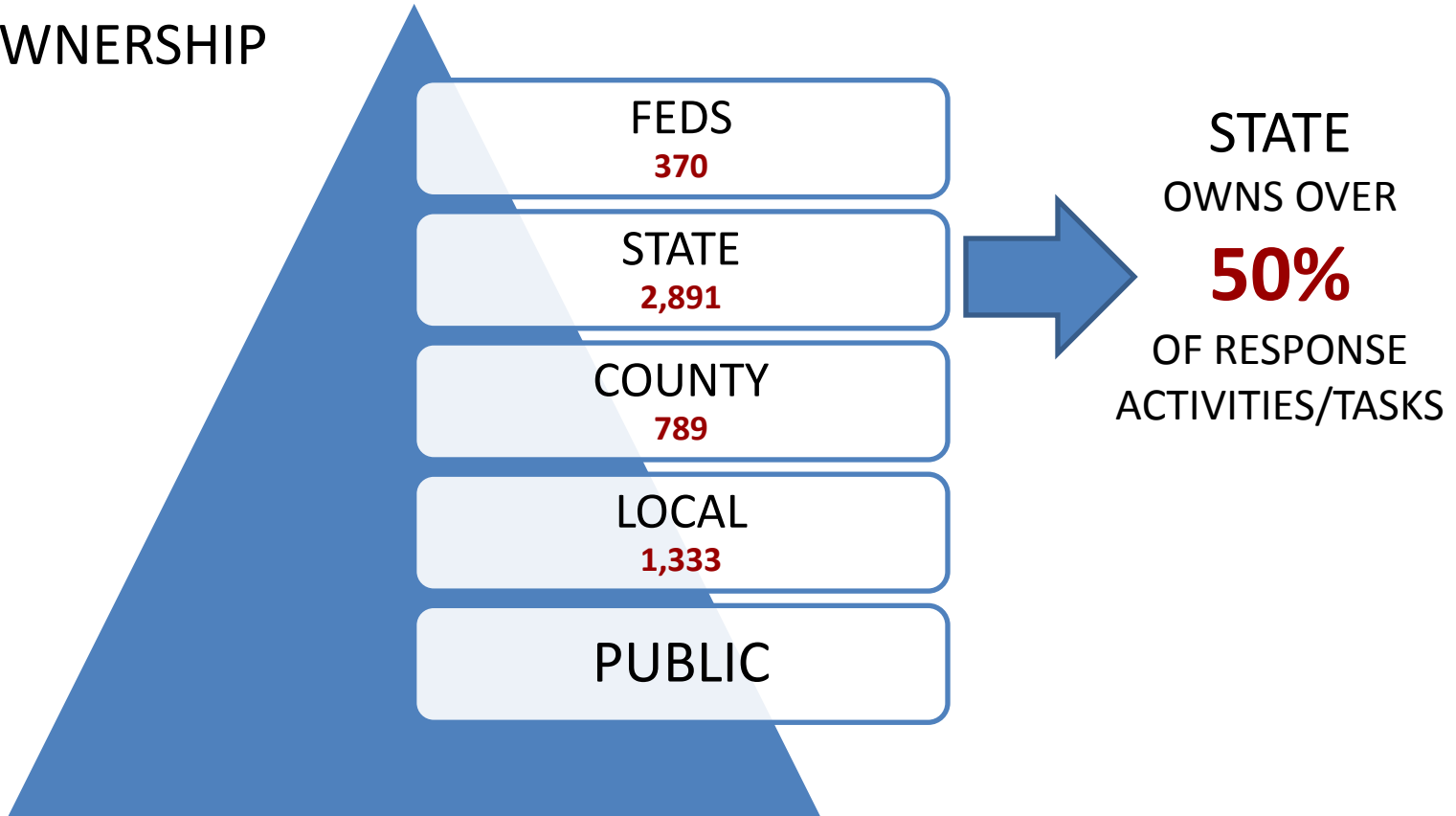




# State Analysis

## KEY FINDINGS

TASK  
OWNERSHIP





## State Analysis

# RECOMMENDATIONS

- Convene Recommended Stakeholders



Use Rapid Response Program and WSMTC framework to develop Defense Sector downsizing plan

- Review major processes & activities/tasks for applicability with stakeholder leads
  - Modify with necessary major processes and activities/tasks
  - Validate projected minutes/hours necessary to support activities/tasks across stakeholders to determine resource loading
- Secure funding for Defense Sector downsizing plan based on cross-jurisdictional focus



## State Analysis

# CONCLUSION

- WA has all the key components/stakeholders to implement a coordinated Defense Sector downsizing response plan
- WA has potential to lead the nation on this issue and serve as model for other states



# **SUBCABINET ON MILITARY DOWNSIZING**

Governor's Conference Room  
Legislative Building



**Department of Commerce**  
Innovation is in our nature.

# **SUBCABINET ON MILITARY DOWNSIZING**

Governor's Conference Room  
Legislative Building



June 17, 2015

# AGENDA



11:00 AM	WELCOME & OPENING REMARKS	Governor Inslee
	GENERAL OVERVIEW & BACKGROUND	Director Bonlender
11:15 AM	PRESENTATION BY COMMERCE CONTRACTOR	OMF
11:25 AM	TRANSITION COMMENTS	Governor Inslee
11:30 AM	SUBCABINET OVERVIEW & CHARGE	Director Bonlender
	<ul style="list-style-type: none"><li>• PROPOSED PURPOSE</li><li>• PROPOSED PARTICIPANTS &amp; STRUCTURE</li><li>• PROPOSED GOALS &amp; DELIVERABLES</li><li>• PROPOSED TIMELINE (Next 15-30 Days)</li><li>• PROPOSED NEXT STEPS</li></ul>	
12:30 PM	CONCLUDE	Director Bonlender



# PURPOSE



**Create coordinated strategic plan  
to respond to and mitigate potential  
military reduction impacts  
on local communities.**



# PARTICIPANTS

## SUBCABINET MEMBERS

- COMMERCE
- ESD
- DSHS
- OFM
- WDVA
- DOR
- DFI
- SBCTC
- WTECB
- L&I
- MIL

## KEY PARTNERS

- JBLM
- WSDOT
- OSPI
- WMA
- WSMTC
- CASA
- USAF
- US NAVY
- AFGE/IAFF
- WDCs
- EDCs
- ADOs





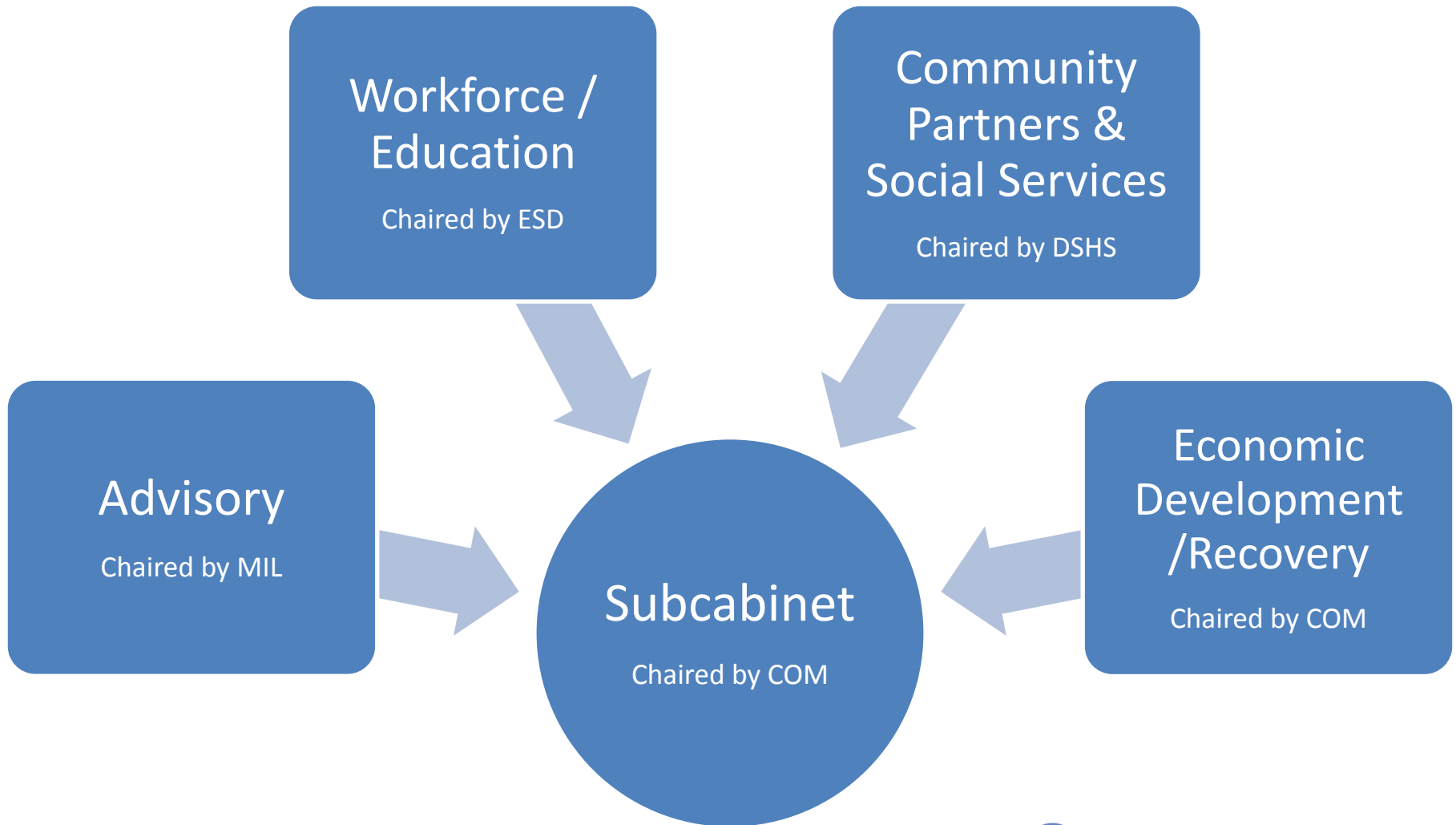
# STRUCTURE



- Chaired by **Commerce**
- Staffed by Governor's **Military & Defense Sector Lead**
- **4 work groups**
  - Advisory Group
  - Workforce Development/Education
  - Community Partners & Social Services
  - Economic Development/Recovery



# STRUCTURE



# STRUCTURE

AGENCIES

## Advisory:

Chaired by MIL  
US Army, Navy, AF  
CASA

## Workforce/Ed:

Chaired by ESD  
SBCTC, LNI  
WTECB

## Community:

Chaired by DSHS  
DFI, WDVA,  
COM (Housing)

## Economic:

Chaired by COM  
OFM, DOR

PARTNERS

Advisory



Workforce/  
Education



Community  
Partners &  
Social Services



Economic  
Development/  
Recovery

## Advisory:

WMA

## Workforce/Ed:

WDCs, WSMTC

## Community:

WSDOT, OSPI  
AFGE, IAFF, SSMCP

## Economic:

EDCs



# PROPOSED DELIVERABLES

Develop strategic plans, and actionable tasks for decision makers, including:

- Scaled-response **Defense Sector Downsizing Plan** *(Subcabinet)*
- **Workforce Transition Plan** *(Workforce/Education)*
- **Public Resource Package** *(Community Partners & Social Services)*
- Scaled-response **Economic Development / Recovery Plan** *(Economic Development)*



# PROPOSED DELIVERABLES

- Each Agency identify **single point-of-contact**
- **Internal communications:**

Kristine Reeves,  
Governor's Military & Defense Sector Lead  
206-256-6105 desk  
[kristine.reeves@commerce.wa.gov](mailto:kristine.reeves@commerce.wa.gov)
- **Press & Public Engagement Communications:**

Jaime Smith  
Governor's Press Office  
[jaime.smith@gov.wa.gov](mailto:jaime.smith@gov.wa.gov)
- **Identification of gaps to implement proposed plans**



# PROPOSED TIMELINE

- 04 JUNE Governor Announces Formation of Subcabinet
  - Outreach to Key Stakeholders
- 17 JUNE Subcabinet 1<sup>st</sup> Meeting
  - Working Group Follow-up
  - Agency Review of Draft Downsizing Framework Assessment
- 22-24 JUNE Association of Defense Communities Meetings to include Army in Washington, DC
- 30 JUNE Subcabinet Work session (proposed)
- TBD Respond to Army Announcement, Implement Defense Sector Downsizing Plan based on scaled response



# NEXT STEPS

- A. Review** DDFA major processes & activities / tasks for applicability with stakeholder leads
- B. Modify** DDFA with necessary major processes and activities / tasks
- C. Validate** projected minutes/hours necessary to support activities/tasks across stakeholders to determine resource loading





# Department of Commerce

Innovation is in our nature.

## **Brian Bonlender**

Director

### **Washington State Department of Commerce**

1011 Plum Street SE, Olympia, WA. 98504

[www.commerce.wa.gov](http://www.commerce.wa.gov)

Follow us [@WAStateCommerce](https://twitter.com/WAStateCommerce)

Staff Contact:

### **Kristine Reeves**

direct: 206-256-6105 | cell: 206-910-1624

[kristine.reeves@commerce.wa.gov](mailto:kristine.reeves@commerce.wa.gov)