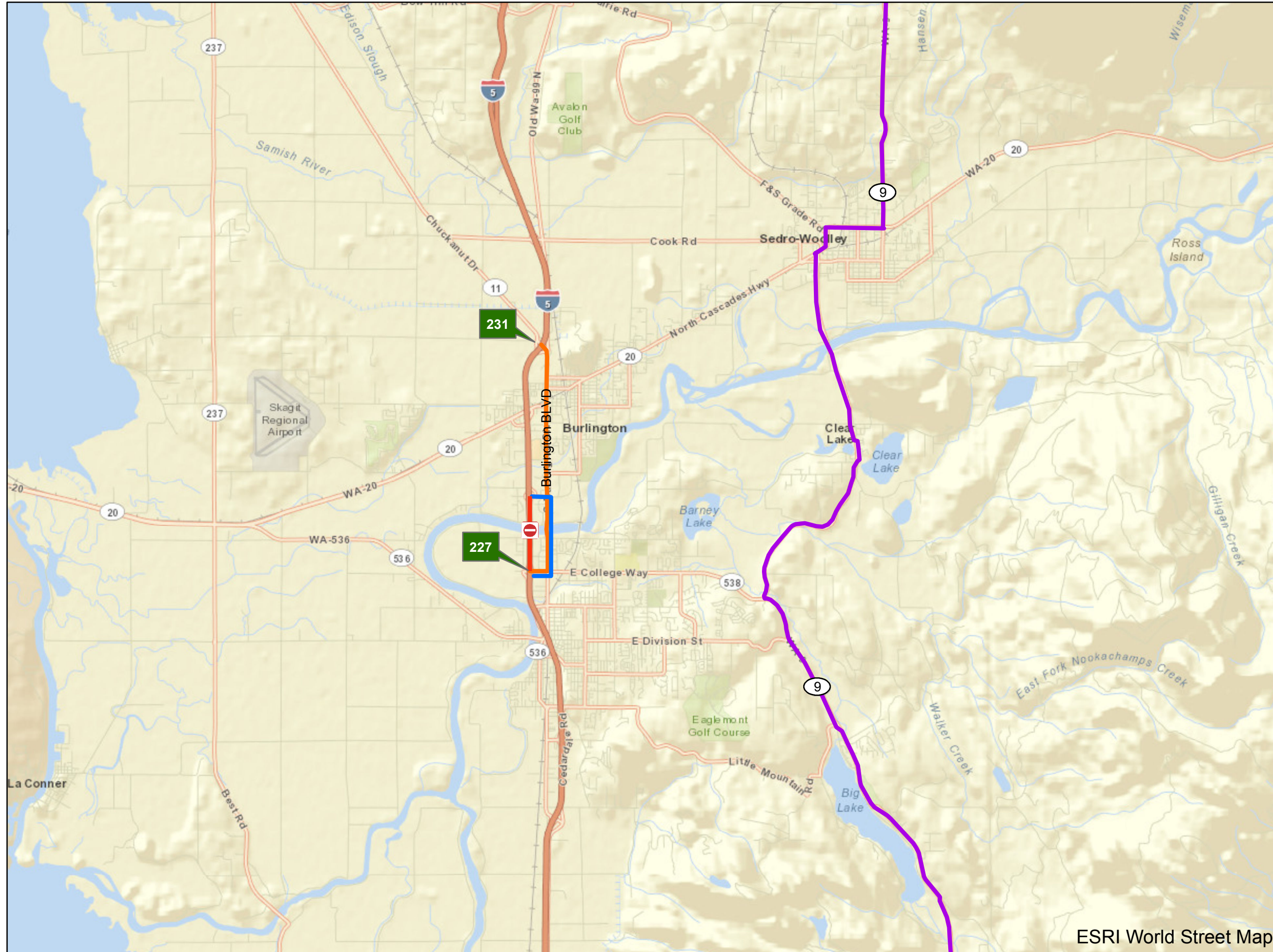


# Skagit River Bridge - Alternate Route Map

Published: 5/23/2013, Time 2100



## Legend

- Southbound Alternate Route
- Northbound Alternate Route
- NB/SB Bypass Alternate Route
- Closed
- Bridge Collapse
- Exit
- Off Exit



**Washington State Department of Transportation**

DISCLAIMER: This product was prepared for use by the WSDOT Emergency Operations Center for its internal purposes only and is not designed or intended for general use by members of the public. WSDOT makes no representation or warranty for fitness of use for a particular purpose with respect to this product. Any user of this product accepts same as is, with all faults, and assumes all responsibility for the use thereof, and further agrees to hold WSDOT harmless from and against any damage, loss, or liability arising from any use of this map.

NOTE: Situational and Event type maps are updated on a one or two hour cycle depending on the activity level of the activation. Please ensure that you are utilizing the most current map product for operational decision making.